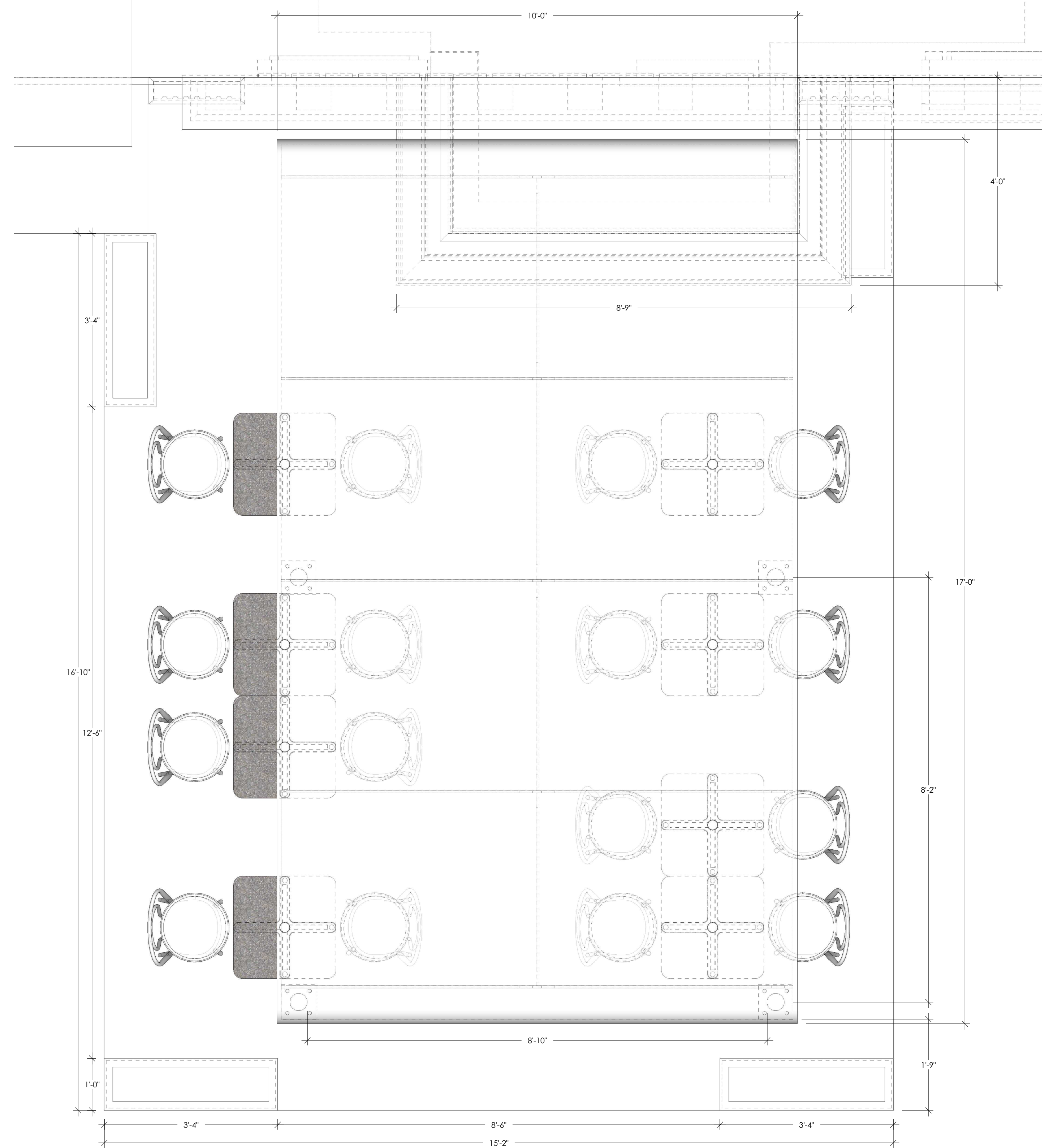
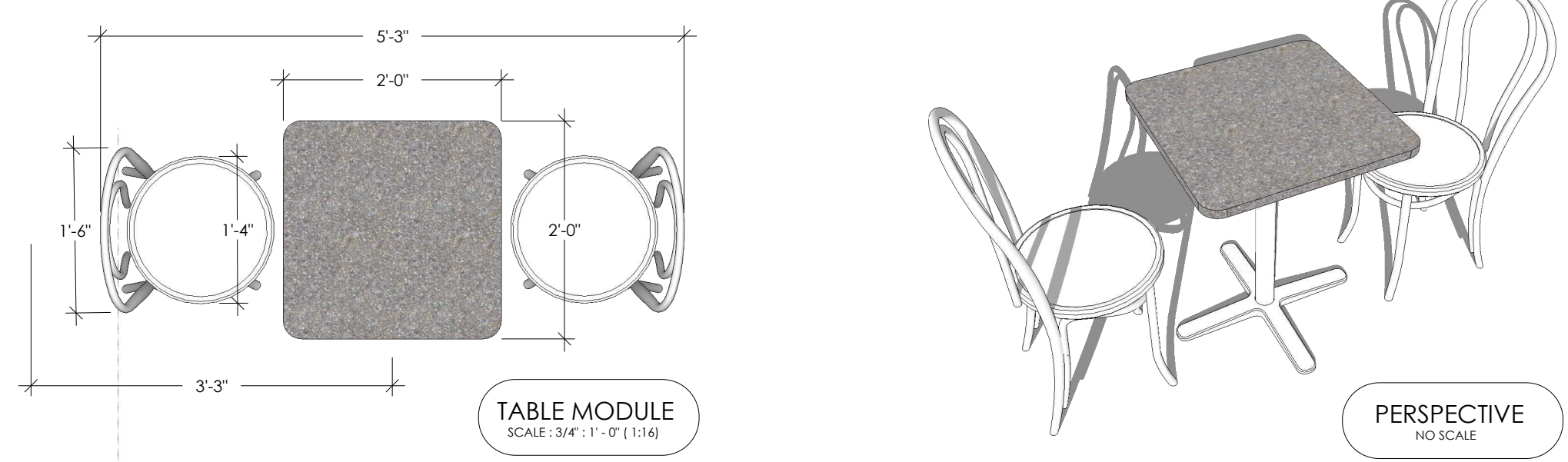


85, 501 5504 CONNECTICUT AVE. NW, WASHINGTON, DC 20015 November 21, 2022, 11:18 AM, November 21, 2022. CUSTOMER SHALL REVIEW THESE DRAWINGS AND DETAILS PRIOR TO CONSTRUCTION TO ENSURE THAT THE CONTENT HEREIN MEETS OR EXCEEDS THE APPLICABLE NATIONAL, STATE OR LOCAL REQUIREMENTS AND ENSURE THE CONTENT OF THESE DRAWINGS PROVIDED HEREIN ARE ACCEPTABLE FOR THIS PROJECT.



PROJECTED DISTRIBUTION
SCALE: 3/4" = 1'-0" (1:16)



PERSPECTIVE VIEW
NO SCALE

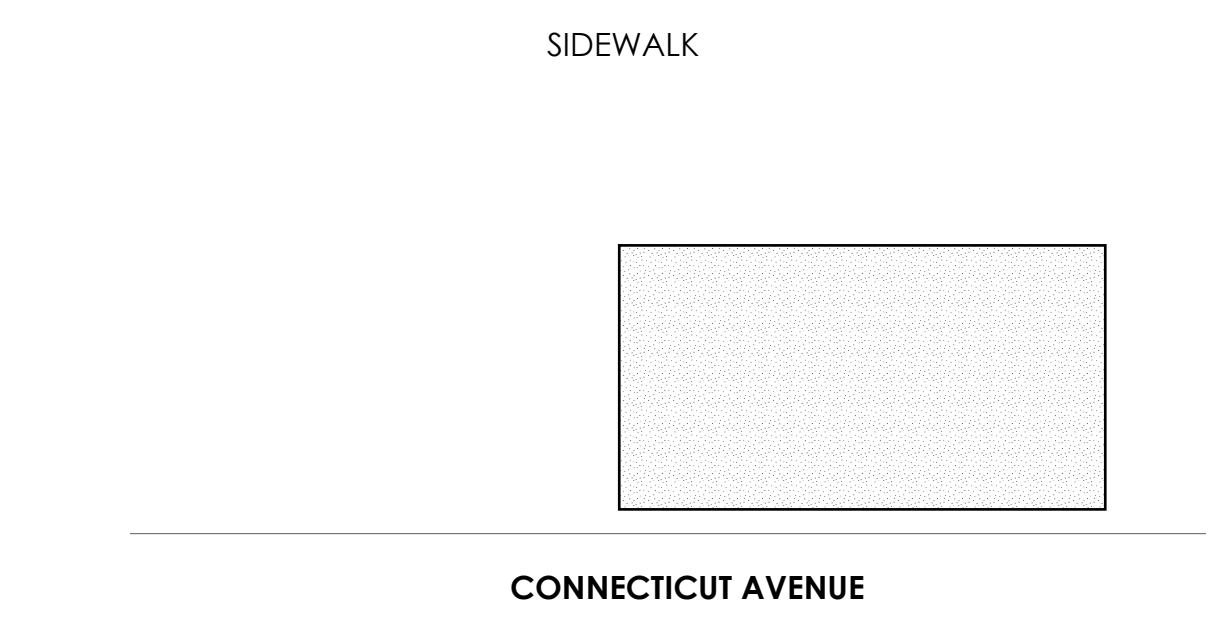
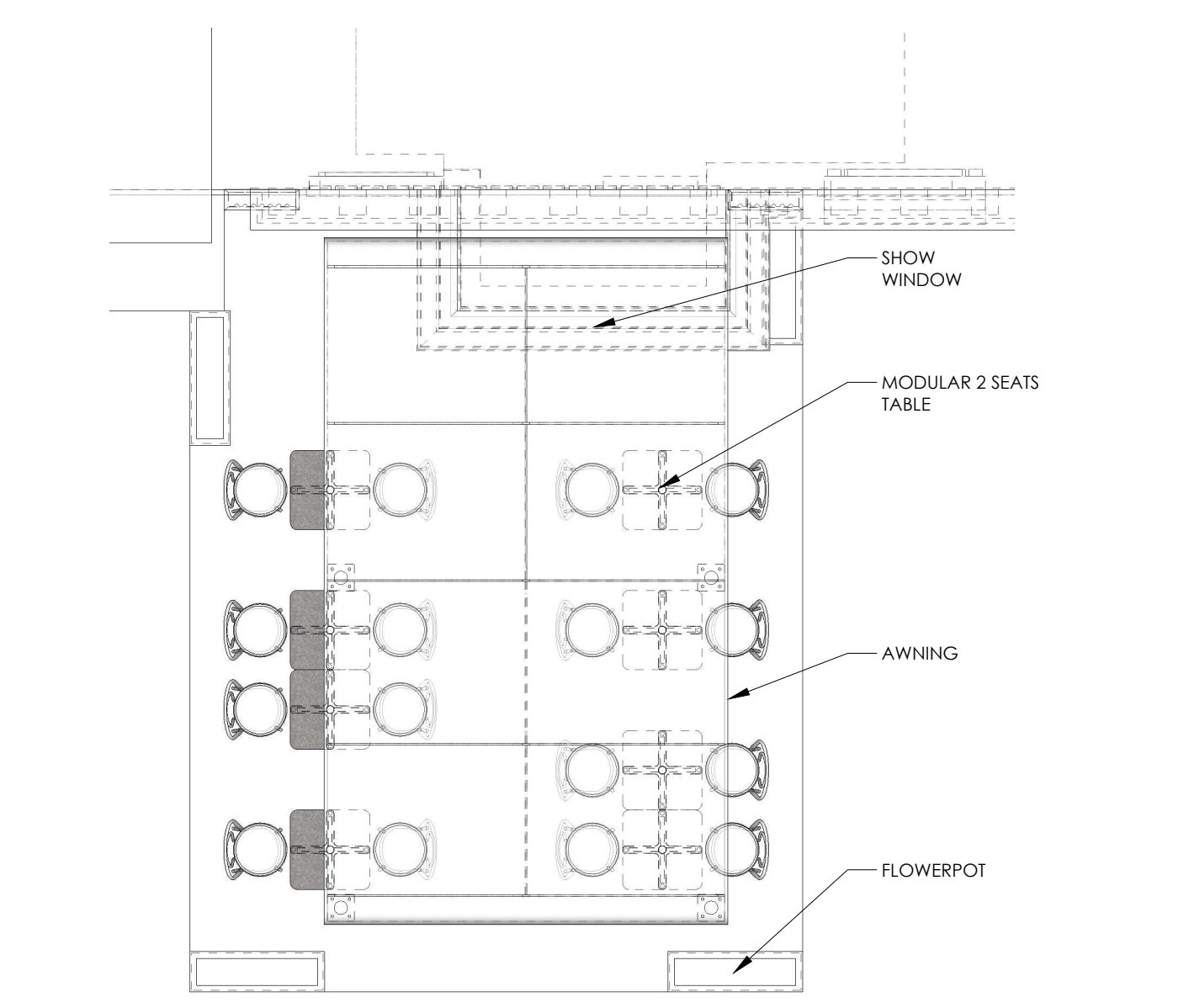
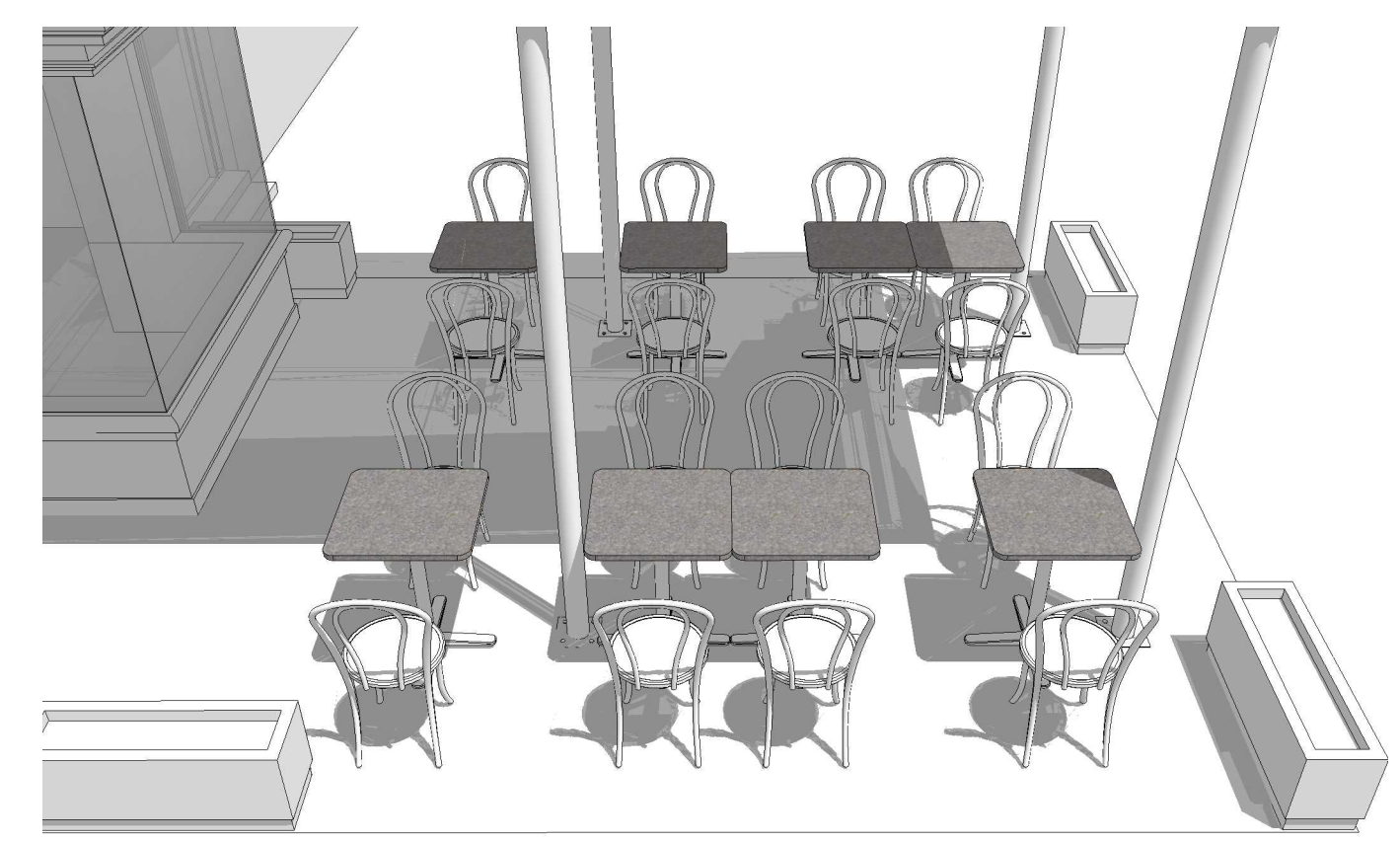
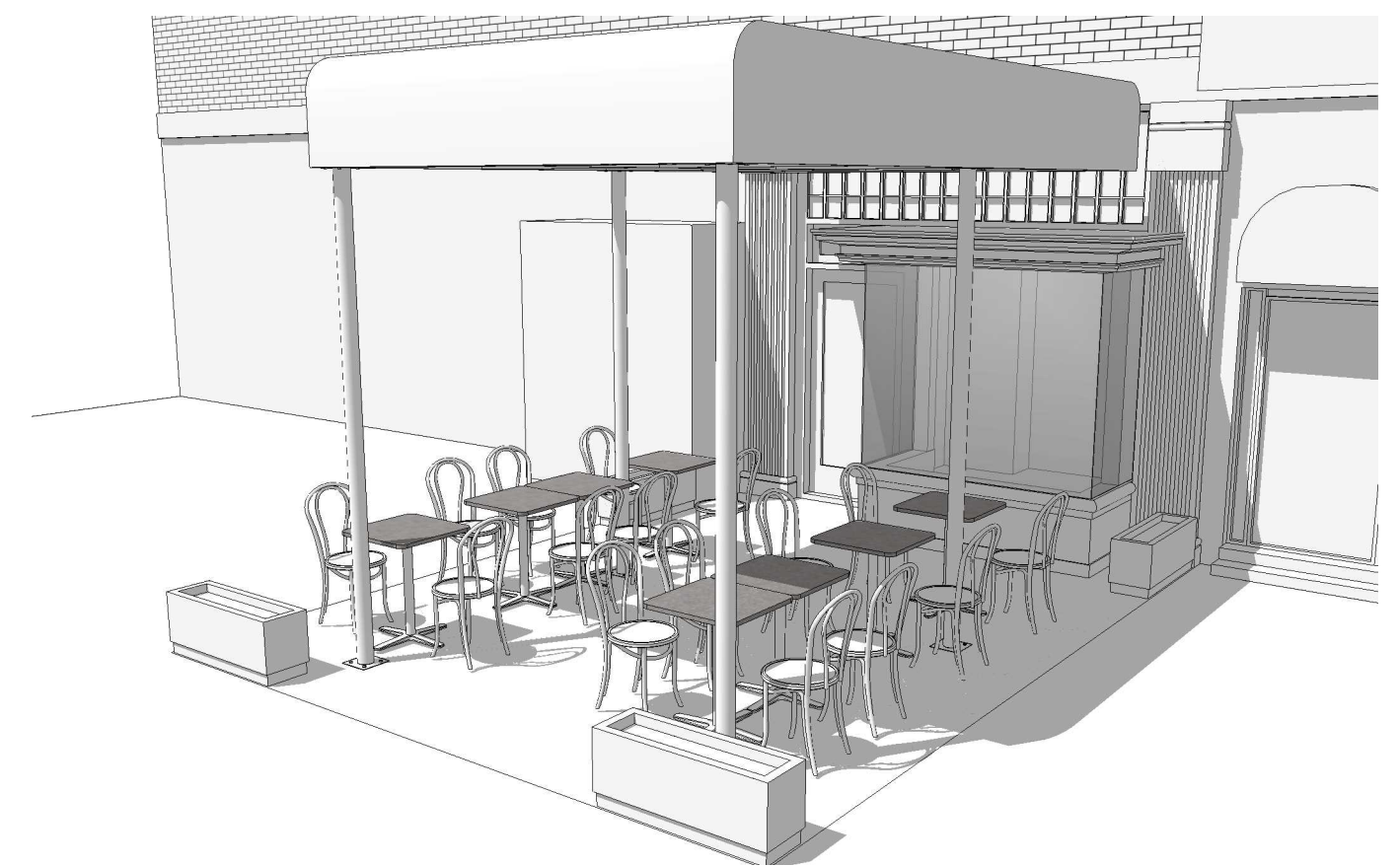
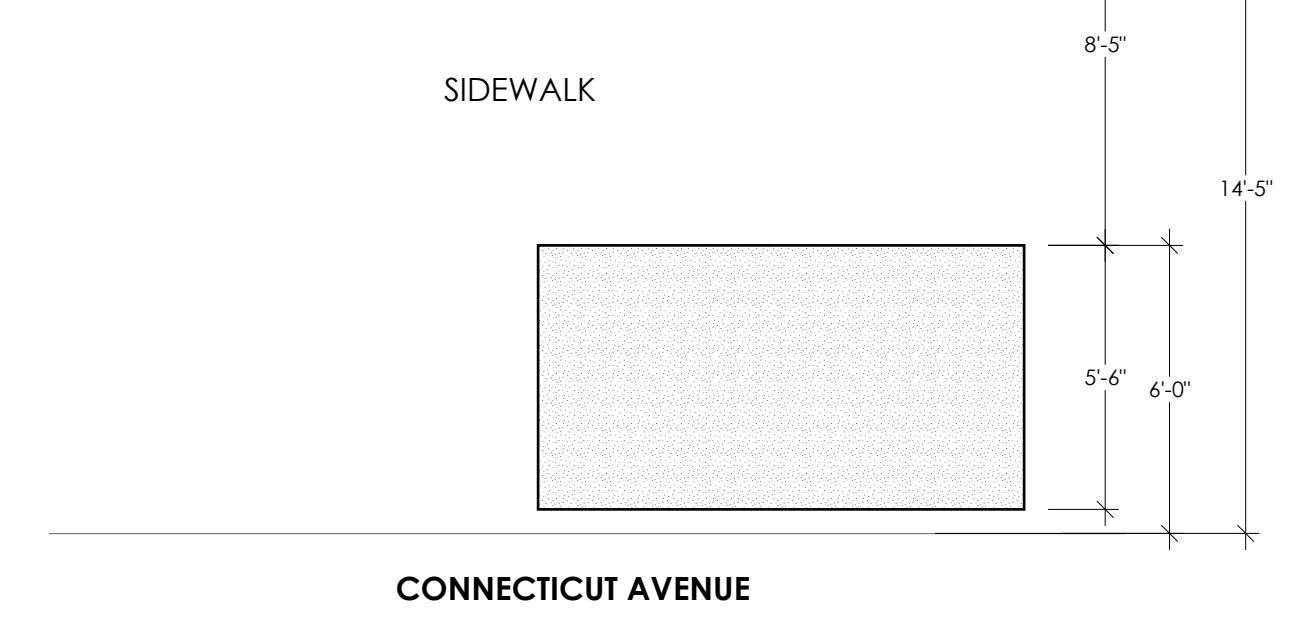
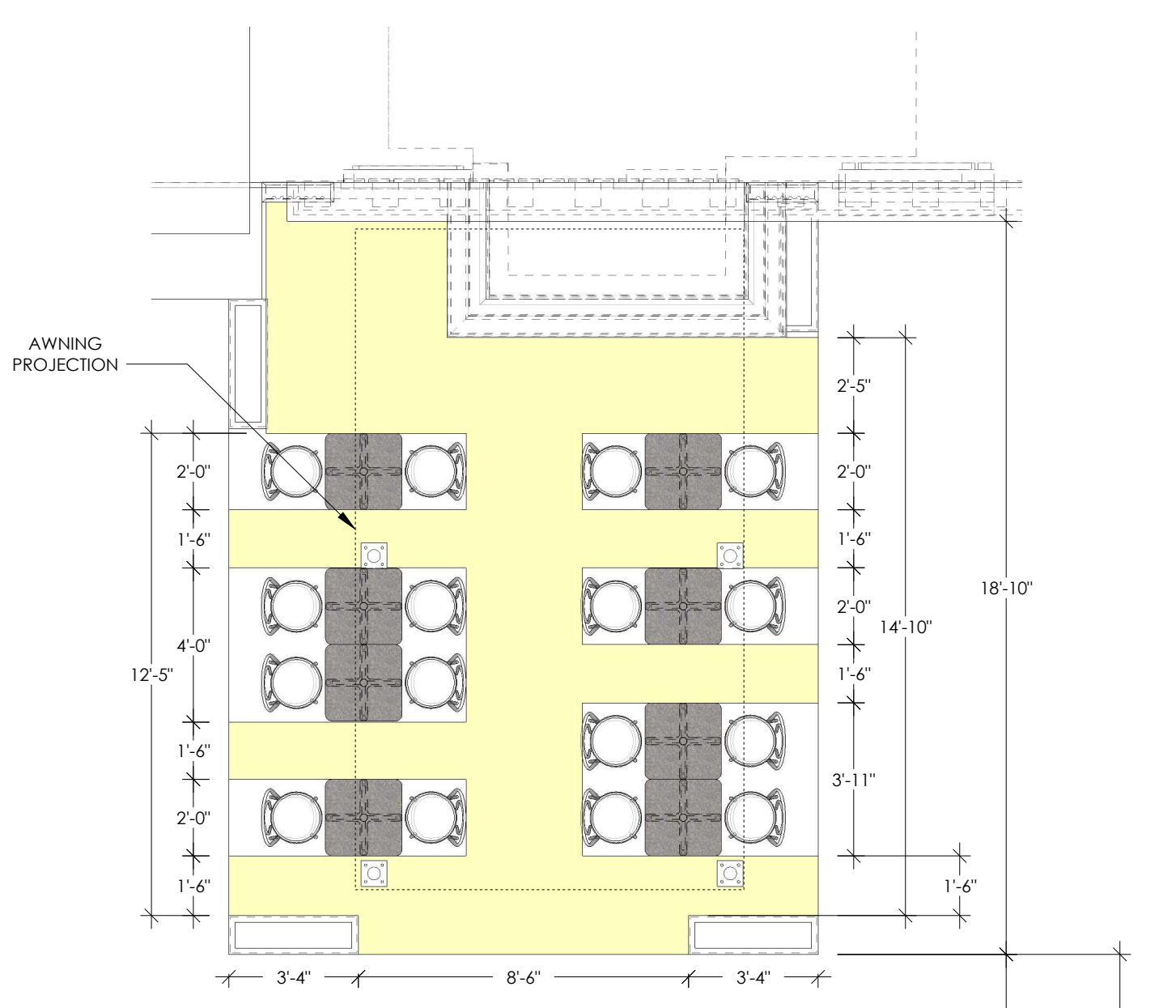
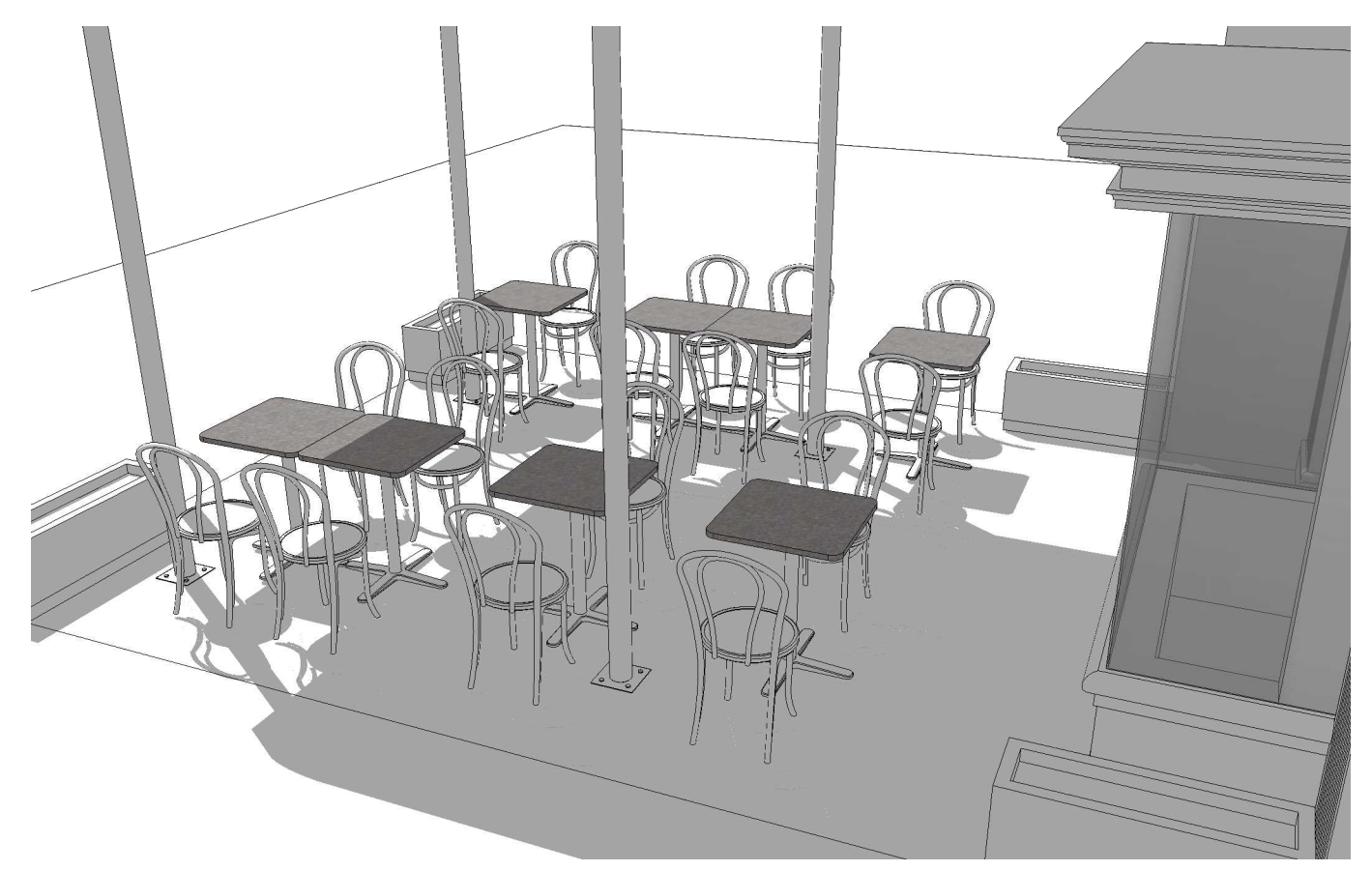


TABLE DISTRIBUTION - TOP
SCALE: 1/4" = 1'-0" (1:48)



PERSPECTIVE VIEW
NO SCALE



CIRCULATION AREAS - TOP
SCALE: 1/4" = 1'-0" (1:48)

PRESENTED BY:

BCE
BRANDES & CASSAGNOL
ENGINEERS

5520 CONNECTICUT AVE. NW #LL4
WASHINGTON, DC 20015

BRANDES & CASSAGNOL
ENGINEERS

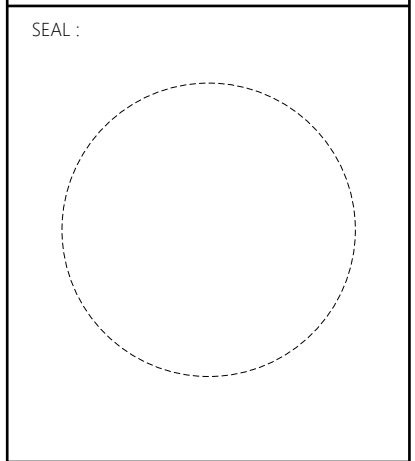
PIERRE CASSAGNOL
BCE Structural Engineers
1 410 808 3613
pcassagnol@bcepc.com

5520 CONNECTICUT AVE. NW #LL4
WASHINGTON, DC 20015

DATE	DESCRIPTION

PROFESSIONAL CERTIFICATION:

I HEREBY CERTIFY THAT THESE DOCUMENTS WERE PREPARED OR APPROVED BY ME, AND THAT I AM DULY LICENSED PROFESSIONAL ENGINEER UNDER THE LAWS OF THE STATE OF MARYLAND. LICENSE NO.: EXPIRATION DAY:



CLIENT:

SIDEWALK CAFE - TABLE DISTRIBUTION

5504 CONNECTICUT AVE. NW, WASHINGTON DC 20015

OWNER:

Mr. PETE GOUSKOS

5504 CONNECTICUT AVE. NW, WASHINGTON DC 20015

DRAWN BY: DATE:

RS November 21, 2022

REVISED BY: DATE:

PROJECT: SIDEWALK CAFE - TABLE DISTRIBUTION

DISTRIBUTION

5504 CONNECTICUT AVE. NW, WASHINGTON DC 20015

PROJECT DATE: NOVEMBER 2022

TITLE: MAIN VIEWS

SHEET No. **A1**

Board of Zoning Adjustment
City of Columbia
CASE NO. 2021-10
ESHEET 10 OF 1